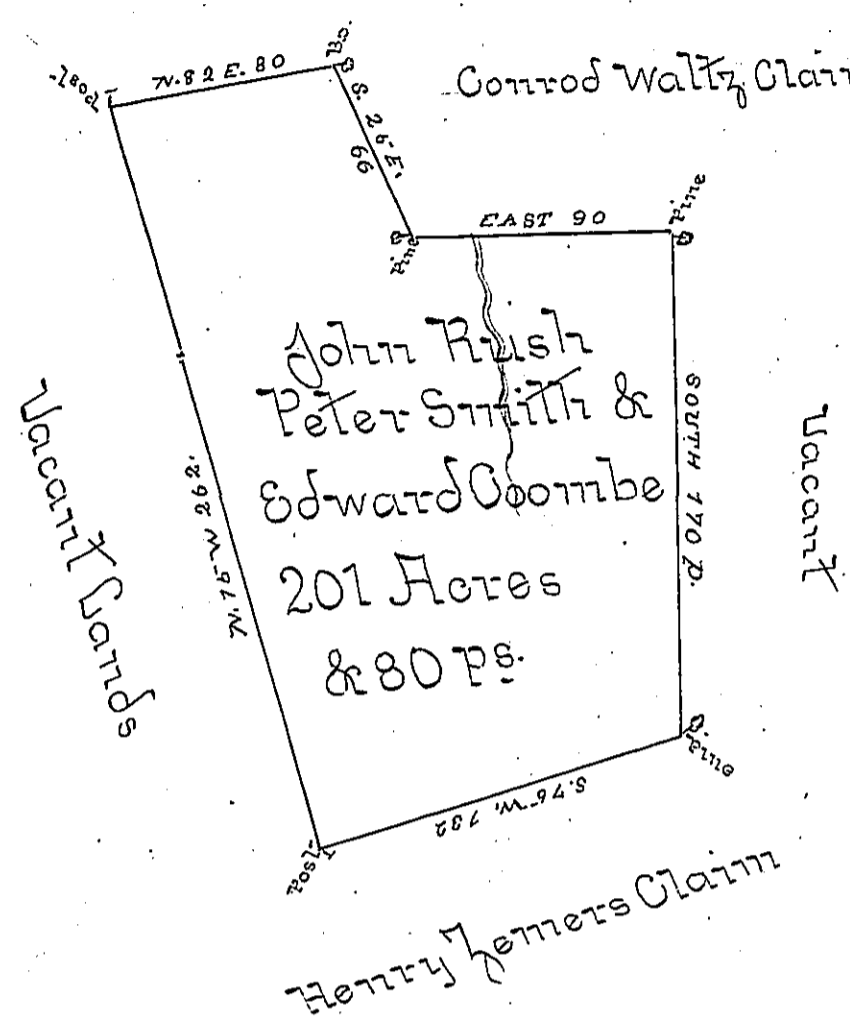


Stephen Tanner's Claim

Conrod Waltz Claim



A tract of a Tract of Land Situate on the South side of
 Donoloway Creek in Bethel Township in the County of Bedford
 Containing Two hundred and one Acres and eighty
 perches with the usual Allowance of six Per Cent for Roads
 &c. Surveyed for John Rush Peter Smith and Edward
 Coombe the 23^d Day of August 1786. In pursuance of
 a Warrant Dated February 14th 1786.

To John Bukens Esq: S.J.

George Woods D.S.

IN TESTIMONY that the above is a copy of the original remaining on file in the
 Department of Internal Affairs of Pennsylvania, made con-
 formably to an Act of Assembly approved the 16th day of
 February, 1833, I have hereunto set my Hand and caused
 the Seal of said Department to be affixed at Harrisburg, this
 first day of October 1896

James W. Latta
 Secretary of Internal Affairs.